



■ PCA Schedule of Areas

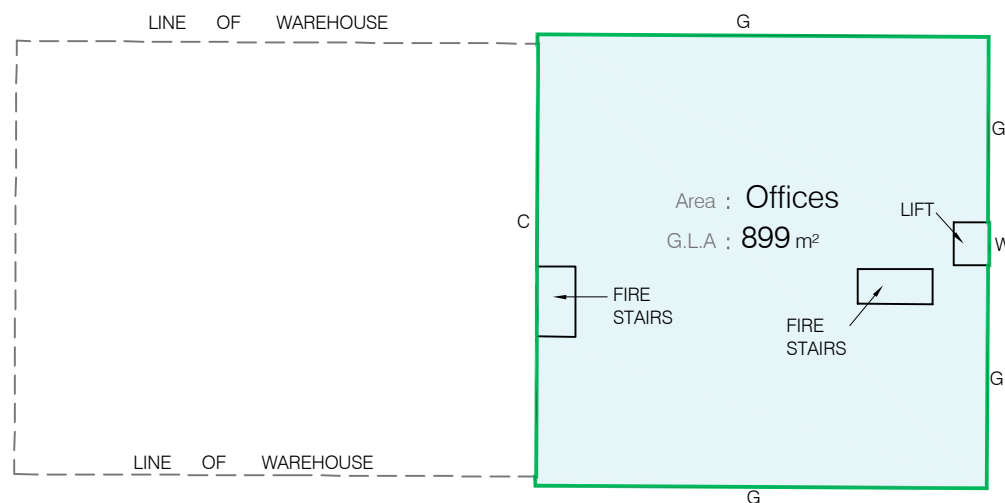
Ground Floor Office	806m <sup>2</sup>
Ground Floor Warehouse	995m <sup>2</sup>
Mezzanine Office/Plant - within warehouse	102m <sup>2</sup>
Level 1 Office	899m <sup>2</sup>
Level 2 Office	899m <sup>2</sup>

Total Area (G.L.A) 3701m<sup>2</sup>

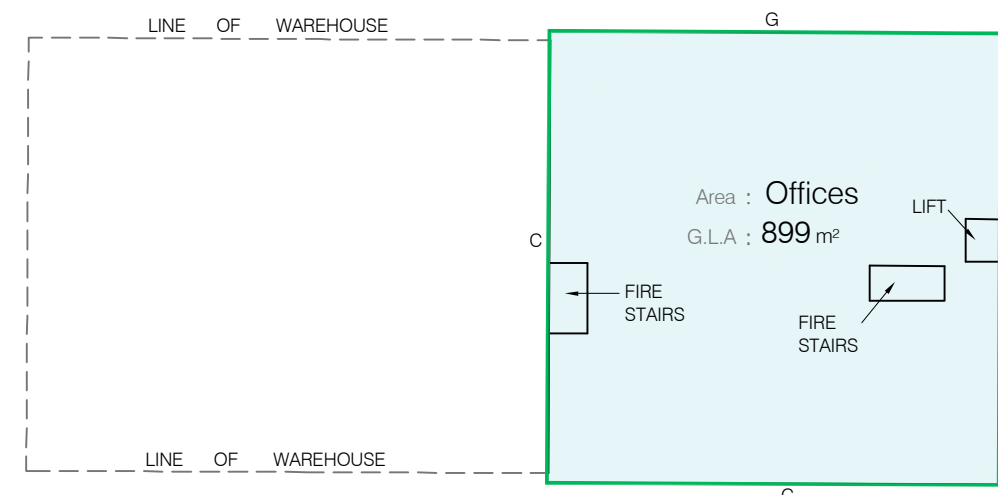
■ PCA Key

- C: Denotes centreline of inter-tenancy wall
- G: Denotes dominant portion of tenancy boundary:- face of glass
- W: Denotes dominant portion of tenancy boundary:- face of wall

AVENUE



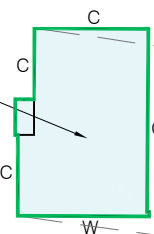
LEVEL 2



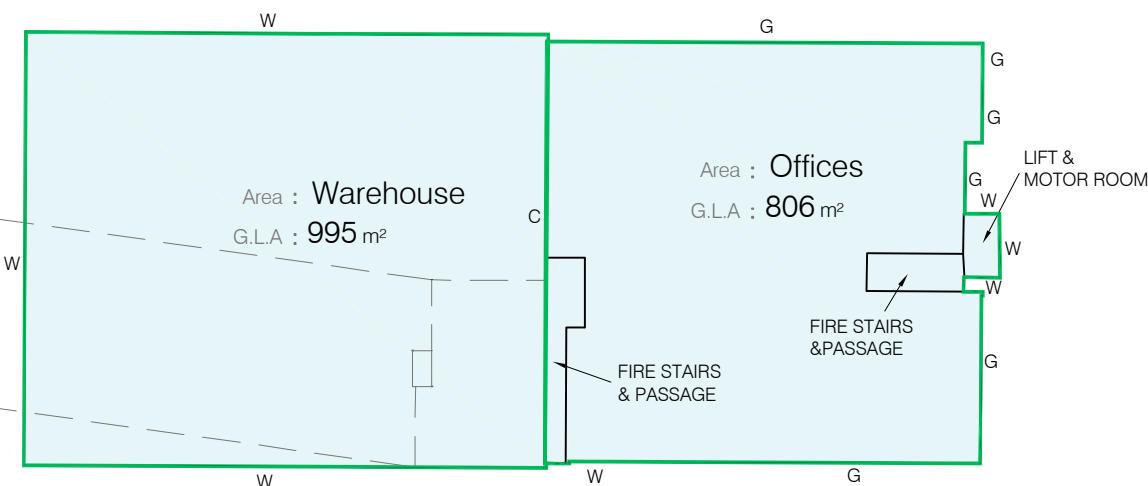
LEVEL 1

CLIFFNOCK

Area : Offices & Plantrooms  
G.L.A : 102 m<sup>2</sup>



MEZZANINE 1 OFFICES & PLANT ROOM WITHIN WAREHOUSE



GROUND LEVEL

ROAD

WATERLOO

10/3/10/3/1001.dwg, 4/4/09/2003 11.43.43 AM

■ Prepared for:

■ PCA Location:

**Plan of Tenancy Areas**  
50 Waterloo Road  
North Ryde  
N.S.W

■ Property Council Of Australia (PCA) Notes:

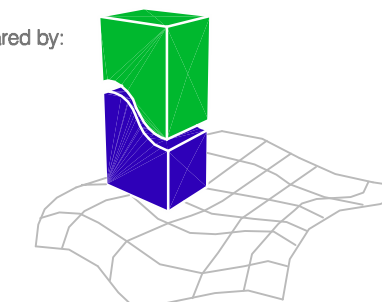
1. AREAS AND TENANCY BOUNDARIES HAVE BEEN DEDUCED IN ACCORDANCE WITH, AND UNDER INTERPRETATION OF THE 'PROPERTY COUNCIL OF AUSTRALIA' METHOD OF MEASUREMENT. REVISED EDITION MARCH 1997 PART 2, GROSS LETTABLE AREA (G.L.A.)
2. ALL PARTIES USING THE AREAS EXPRESSED UPON THIS SKETCH SHOULD AGREE WITH THE BOUNDARY DELINEATIONS.
3. THIS PLAN IS TO BE READ IN CONJUNCTION WITH THE WRITTEN REPORT.: (SEE PCA DETAILS)

■ PCA Details:

**Report Date:** August 2003  
**Report Ref:** B737-001-jmc.doc  
**Dwg Scale:** 1:500

**CAD Ref:** B737-001.dwg  
**Layout:**

■ Prepared by:



**Whelans**

Whelans Operations Pty Ltd  
ACN: 088 148 743

Level 5, 55 York Street  
Sydney, NSW 2000  
DX 288 Sydney  
t: 02 8234 8300  
f: 02 9262 6511

whelanslic.com.au